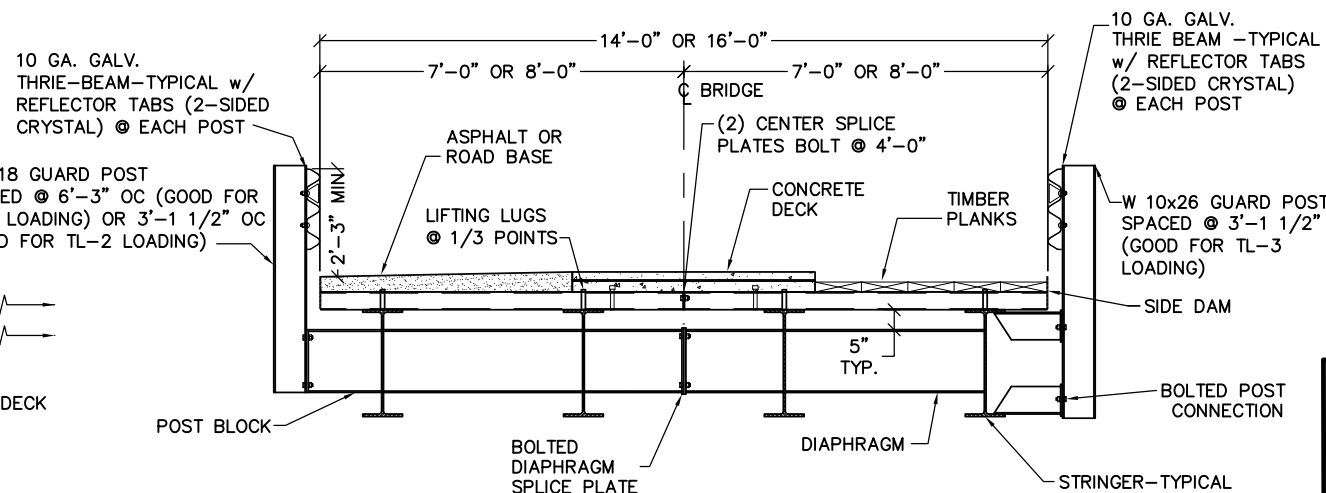


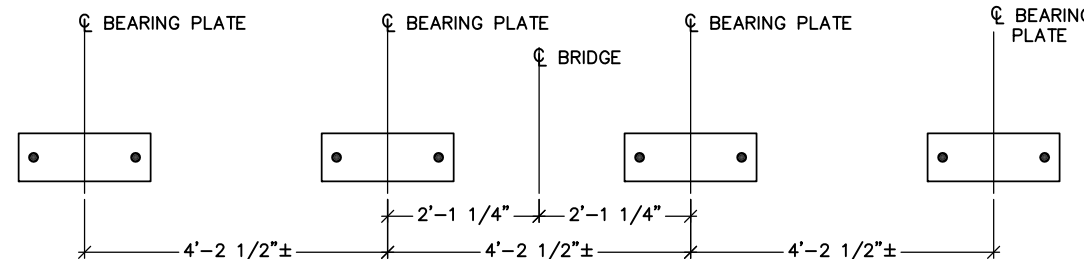
BRIDGE DATA	
OUT TO OUT BRIDGE LENGTH	30'-8" TO 80'-8"
STRINGER LENGTH	30' TO 80'
CL TO CL ANCHOR BOLT	29'-4" TO 79'-4" MAX
BEARING THICKNESS	1 1/4" ±

TYPICAL STRINGERS			
LENGTH	STRINGER	HL 93 DEFLECTION L/X	MAXIMUM ADTT
30'	W 24	1224	342
35'	W 24	820	194
40'	W 24	761	293
45'	W 30	960	1048
50'	W 30	737	730
55'	W 33	958	1656
60'	W 33	782	1022
65'	W 36	861	1222
70'	W 36	728	842
75'	W 36	725	913
80'	W 36	731	1033

PLAN VIEW

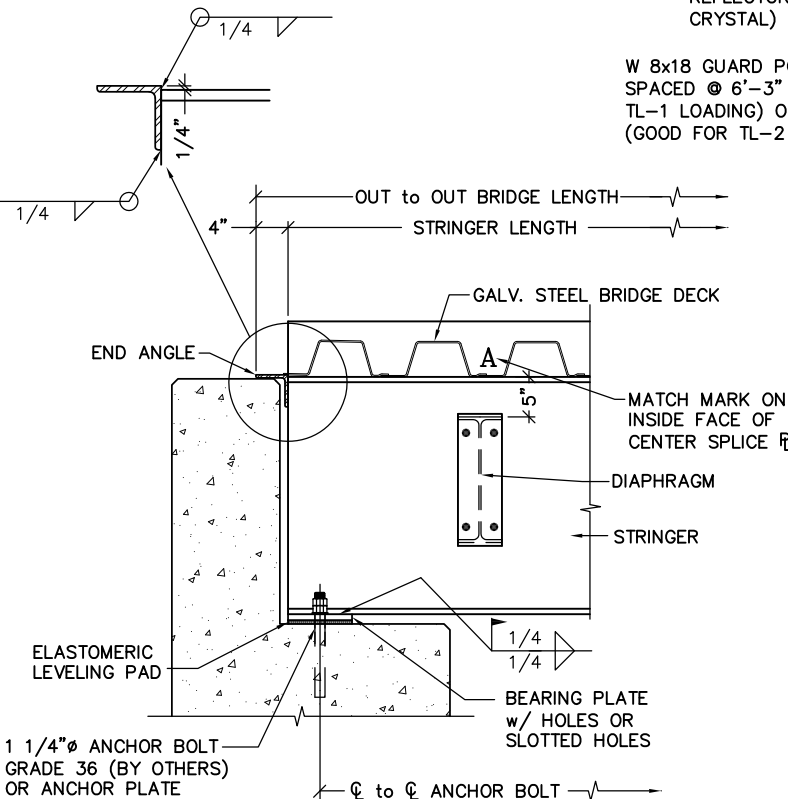


SECTION A



ANCHOR BOLT LAYOUT

(CL OF STRINGERS MAY NOT ALIGN WITH CL OF BEARING PLATES)



BEARING DETAIL

GENERAL NOTES:

- DESIGN IS IN ACCORDANCE WITH THE AASHTO "LRFD BRIDGE DESIGN SPECIFICATIONS" - 4TH EDITION.
- MATERIALS (UNLESS NOTED OTHERWISE):  
STRUCTURAL STEEL: ASTM A588 WEATHERING STEEL Fy = 50 ksi  
STEEL BRIDGE DECK: ASTM A653 GRADE 50 CLASS 1 Fy = 50 ksi (GALVANIZED)  
ANCHOR BOLTS: ASTM F1554 GRADE 36 Fy = 36 ksi  
ELASTOMERIC PADS: GRADE 4, 60 DUROMETER  
SHEET PILING: ASTM A929 Fy = 33 ksi
- ALL SHOP WELDING SHALL BE GAS METAL ARC WELDING OR FLUX CORED ARC WELDING PROCESS WILL BE USED.
- ALL BOLTS, NUTS, AND WASHERS SHALL BE FURNISHED IN THE AMOUNT OF 5% IN EXCESS OF THE NUMBER REQUIRED FOR EACH SIZE AND LENGTH.
- DESIGN LOADINGS:  
BRIDGE DEAD LOAD PLUS 80 PSF TOTAL WEARING SURFACE.  
VEHICLE LIVE LOAD HL93 WITH U80 OWNER SPECIFIED VEHICLE.  
WIND LOAD OF 50 PSF AGAINST HEIGHT OF STRINGER PLUS SIDE DAM.  
GUARDRAIL DESIGNED FOR TL-1, TL-2, OR TL-3 LOADING IN ACCORDANCE WITH AASHTO LRFD BRIDGE DESIGN SPECIFICATIONS - 4TH EDITION APPENDIX A13.2 (RAIL HAS NOT BEEN CRASH TESTED).
- FINISH:  
ALL EXPOSED SURFACES OF STRUCTURAL STEEL TO BE WIPE CLEANED IN ACCORDANCE WITH SSPC-SP1. EXPOSED SURFACES OF STEEL SHALL BE DEFINED AS THOSE SURFACES SEEN FROM THE OUTSIDE OF THE STRUCTURE
- INSTALLATION:  
a. EACH SECTION TO BE LIFTED FROM THE FOUR LIFTING LUGS.  
b. ATTACH RIGGING TO LIFTING LUGS WITH ADEQUATELY SIZED RIGGING HARDWARE. RIGGING MATERIALS AND METHODS ARE THE RESPONSIBILITY OF THE INSTALLER.  
c. CAPACITY OF THE LIFTING LUG IS 24,000 POUNDS AT A 45-DEGREE LIFT ANGLE  
d. ALL STRUCTURAL BOLTS TO BE INSTALLED PER THE TURN-OF-THE-NUT METHOD
- ASPHALT SURFACE INSTALLATION PROCEDURE (WHEN APPLICABLE):  
1. CLEAN METAL SURFACES OF ALL FOREIGN MATTER.  
2. APPLY A TACK COAT OVER DECK SURFACE.  
3. FILL AND COMPACT ALL CORRUGATIONS WITH ASPHALT TO THE TOP OF THE DECK. OVERLAY A LEVELING COURSE AND ADDITIONAL COURSES AS NECESSARY TO FINAL SURFACE ELEVATION, AND COMPACT TO REQUIRED DENSITY.
- MAINTENANCE NOTE: DO NOT APPLY DE-ICING OR DUST PROHIBITIVE CHEMICALS OR SALTS TO ANY PART OF THE BRIDGE STRUCTURE.
- ANCHOR BOLTS SHALL BE EMBEDDED A MINIMUM OF 12" INTO THE ABUTMENT. ANCHOR BOLTS SHALL BE SWEDGED, THREADED, HOOKED, HEADED OR THREADED & NUTTED TO SECURE A SATISFACTORY GRIP UPON THE MATERIAL USED TO EMBED THEM IN THE ABUTMENT. SETTING ANCHOR BOLTS WITH EPOXY-RESIN GROUT IN DRILLED OR FORMED HOLES IS ACCEPTABLE AS LONG AS THE EPOXY-RESIN GROUT WILL DEVELOP THE FULL CAPACITY OF THE ANCHOR BOLT
- ELASTOMERIC PADS ARE USED TO PROVIDE A LEVEL BEARING SURFACE ONLY.
- BIG R BRIDGE IS AISC QUALITY CERTIFIED FOR SIMPLE AND MAJOR STEEL BRIDGES WITH A FRACTURE CRITICAL AND SOPHISTICATED PAINT ENDORSEMENT.

STANDARD 14' & 16' MODULAR BRIDGES:

- STANDARD WEARING SURFACE LOAD OF 80 PSF WILL ACCOMMODATE UP TO 5 1/2" OF GRAVEL BASE, 4" OF CONCRETE OR 4 1/2" OF ASPHALT SURFACING ABOVE THE STEEL BRIDGE DECK CORRUGATIONS.
- STANDARD DESIGN LIVE LOADING IS HL93 WITH U80 OWNER SPECIFIED VEHICLE. IF OTHER LOADING IS REQUIRED, IT MAY REQUIRE A CUSTOM DESIGN.
- STANDARD DETAILS ARE ONLY APPLICABLE FOR 14' OR 16' WIDE AND 30' TO 80' LONG BRIDGES. BRIDGES OUTSIDE THESE DIMENSIONS WILL REQUIRE CUSTOM DESIGNS.
- BRIDGES SHORTER THAN 30' WILL OFTEN REQUIRE CUSTOM DIAPHRAGMS, POST BLOCK AND RAIL DESIGNS.
- BRIDGES LONGER THAN 80' WILL OFTEN REQUIRE STRINGERS TO BE SPLICED.
- GUARDRAIL OPTIONS (ONLY GOOD FOR W24 OR DEEPER STRINGERS):  
1) 10 GA THRIE-BEAM WITH W8x18 POSTS SPACED @ 6'-3", GOOD FOR TL-1 LOADING.  
2) 10 GA THRIE-BEAM WITH W8x18 POSTS SPACED @ 3'-1 1/2", GOOD FOR TL-2 LOADING.  
3) 10 GA THRIE-BEAM WITH W10x26 POSTS SPACED @ 3'-1 1/2", GOOD FOR TL-3 LOADING
- CUSTOMER SHOULD SPECIFY BEARING DESIGN REQUIREMENTS (STANDARD 1/2" PADS DO NOT MEET AASHTO DESIGN CRITERIA AND SHOULD ONLY BE SOLD AS LEVELING PADS).
- CUSTOMER SHOULD SPECIFY GUARDRAIL DESIGN REQUIREMENTS
- CUSTOMER SHOULD SPECIFY DEFLECTION REQUIREMENTS. PER AASHTO SECTION 2.5.2.6.2 DEFLECTION REQUIREMENTS ARE OPTIONAL.
- CUSTOMER SHOULD SPECIFY AVERAGE DAILY TRUCK TRAFFIC (ADTT). IF AVERAGE IS MORE THAN MAXIMUM, BRIDGE WILL REQUIRE CUSTOM DESIGN.

