

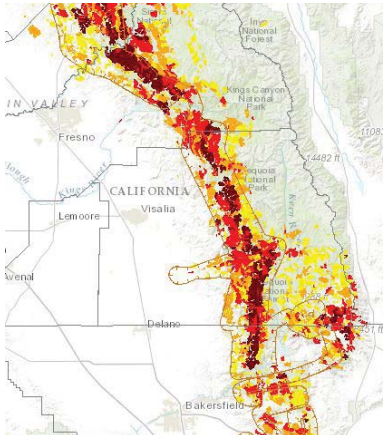
# Tree Mortality Task Force

## One Year Review and Status of Executive Order Directives



In October 2015, Governor Brown issued an Executive Order addressing tree mortality and established the Tree Mortality Task Force (TMTF). The TMTF is comprised of more than 80 State and federal agencies, local governments, utilities, and other stakeholders working together to address epidemic levels of tree mortality driven by California's fifth year of drought. Since its inception, the TMTF has made significant progress on the 19 directives set forth in the Governor's Executive Order.

### Tracking & Monitoring Mortality Spread



Using data from the U.S. Forest Service annual aerial flights, CAL FIRE developed an interactive map that enables the public to easily see how tree mortality impacts their area and shows tree mortality development since 2012.

### High-Hazard Counties Identified



10 counties starting in Placer County and extending along the Central Sierra into Kern County have been identified as high-hazard zones for tree mortality. Each county has a disaster declaration and a task force to help address the risks from tree mortality.

### Triage



423,134 dead trees removed from high-hazard zones.

51,607 miles of roads and powerlines inspected and cleared of dead trees.

26,062 acres treated and 1,375 acres of fuel breaks created and maintained.

### Tree Removal Equipment

\$6 million of state funds spent on equipment to remove dead and dying trees in high-hazard zones.



### Grants Awarded

Over \$15 million awarded in grants for local projects to help combat tree mortality.



### Public Education & Outreach

Development of educational campaigns including brochures, factsheets, radio PSAs and websites to inform the public about tree mortality, bark beetles and steps the public can take on their lands.



# Tree Mortality Task Force



## The Emergency Continues...

While significant progress has been made to address the tree mortality issue in California, the bark beetle epidemic and the drought continue to kill millions of trees. With the framework the Task Force has developed, agencies will continue to address life and safety risks and support local communities.



### Regional Forester, Randy Moore U.S Forest Service, Pacific Southwest Region



"I appreciate Governor Brown's leadership in establishing the Task Force just over one year ago, and the commitment and hard work by the Task Force members and communities affected by tree mortality. The massive scale of tree mortality in California is something we have not seen in our lifetimes – it is something our parents and grandparents did not see in their lifetimes. This is going to change the face of our forests in California. We have all accomplished so much by working together this past year. The Forest Service is committed to continuing this work and keeping the productive, collaborative spirit of the Task Force alive as we face the many challenges ahead."

### Deputy County Administrator, Tracie Riggs Tuolumne County



"The County of Tuolumne is thankful to have been included in the Tree Mortality Task Force over the course of the last year. The monthly meetings have created an effective forum to address and deal with key issues at the local level. We also appreciate CAL FIRE, as they have led the Task Force from the beginning stages of a "think tank" to a dynamic, collaborative work group. Their consistent, proactive leadership has been

critical to pushing through bureaucracy and red tape, empowering local government to protect public infrastructure, life and property. Due to the collaborative work of the Task Force and funding administered by Cal OES, our county has initiated multiple tree removal projects improving upon the safety of residents and first responders."

## Real Life Impacts

On February 17, 2016 a bark beetle infested pine tree snapped about 20 feet from the ground, falling onto a home and taking down powerlines on the property. It is evident that dead trees are a real threat to the public and can damage property, roadways, powerlines and other critical infrastructure.

Utilities participate in the Tree Mortality Task Force, including Pacific Gas & Electric Co. "At PG&E, nothing is more important than safety," said Pat Hogan, Senior Vice President of Electric Transmission and Distribution. "While we inspect 134,000 miles of power line each year, we're going above and beyond to address the tree mortality crisis. We are conducting additional air and ground patrols of our power lines and exploring new ways to use advanced technology to inspect and identify hazardous trees. This year alone, our specialized tree crews are working to remove an additional 200,000 dead and dying trees, helping to reduce the risk of injury, property damage and wildfires."



It is imperative that the Tree Mortality Task Force continue to provide tree removal equipment, award grants and educate the public about the dangers posed by dead trees. Through coordinated efforts, we can begin to regrow healthier forests for all Californians to enjoy.